



Presents

GLAMCO Sinha Sadan

RERA APPROVE: BRERAP00062804201229E00

SAI MANDIR GALI, SHIVPURI, PATNA
3 BHK Deluxe Flats



GLAMCO Sinha Sadan

SAI MANDIR GALI, SHIVPURI, PATNA
3 BHK Deluxe Flats

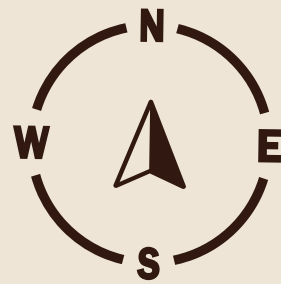


REVISED PLAN

AREA SPECIFICATION AREA IN SQ.FT.

FLAT NO	UNIT	CA	BUA	SBUA
1	3BHK	1251	1340	1742
2	3BHK	1207	1293	1681
3	3BHK	1385	1500	1950

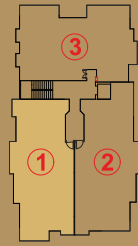
GROUND FLOOR PLAN



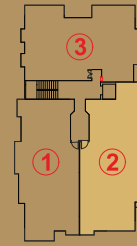
TYPICAL FLOOR PLAN



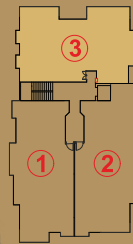
ISOMETRIC FLOOR PLAN



FLAT NO	UNIT	CA	BUA	SBUA	3 Bedrooms	3 Toilets
1	3BHK	1251	1340	1742	4 Balconies	



FLAT NO	UNIT	CA	BUA	SBUA	3 Bedrooms	3 Toilets
2	3BHK	1207	1293	1681	4 Balconies	



FLAT NO	UNIT	CA	BUA	SBUA
3	3BHK	1385	1500	1950

3 Bedrooms	3 Toilets
3 Balconies	



Specification



FOUNDATION : As per the design of Structural Engineers.



STRUCTURE : Earthquake resistant RCC Framed Structures.



SUPER STRUCTURE : 5" thick ACC Block/Fly Ash Brick Masonry in RCC Frames.



INTERNAL WALL FINISHES : Sand Cement Plaster covered with two coats of wall Putty over it. Paints shall be Charged Extra.



EXTERNAL WALL FINISHES : Shall be finished with Cement Sand Plaster covered with two coats of Weather coat Paints over the coat of wall Putty.



FLOORING : Vitrified Tiles in Hall & Rooms & Ceramic/Vitrified Tiles in Bathrooms. Granite/ Designed Tiles in common Lobbies & Stairs. Kota Stones in Car Parkings & Drive Way.



KITCHEN : Granite Kitchen Top, 2 Feet high Glazed Tiles Dado over it. Stainless Steel Kitchen Sink with Hot & Cold Point (Sink Mixture)



TOILETS : Glazed Tiles Dado up to bottom of the Roof Beams, Glazed Vitreous Branded Sanitary wares & Branded CP Fittings. Hot & Cold Point in Bathing Area of each Toilets & Basins.



STAIRCASE : RCC Stairs with Granite Floors with S.S. Railings.



DOOR: Sal Wood (Kapoor) Frames, 30mm Fully Laminated Flush Door Panel & Doors : Chowkhat.



WINDOWS: Fully Glazed 2-Track UPVC Windows. Windows :



ELECTRICALS : Branded Concealed Copper Wiring, Branded Modular Switches & Sockets, Adequate Lighting & TV Points in Rooms, Halls, Kitchen & Toilets, as per the design of the Architect & Engineers.



LIFT : Otis / Jhonson.



GENERATOR : Eco- friendly Branded Common Generator for 500 VA Supply in each Flats, adequate 24 hours Power Back up in Common Areas & Lift.



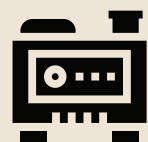
“ More spacious homes.
For more inspired living.”



COMMON AMENITIES



CAR PARKING



24 HOURS POWER BACKUP



FIRE FIGHTING AS PER NORM



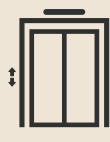
24 X 7 CCTV SURVEILLANCE IN CAMPUS



RAINWATER HARVESTING



24X7 WATER SUPPLY



CONVENIENT ELEVATORS



24X7 SECURITY GUARD



OUR UPCOMING PROJECTS



SHEO Sashi Apartment

JUSTICE MANDAL PATH, Puniachak, Patna-23



SUDARSAN Enclave

AYODHYAPURI, Kokar, Ranchi

LOCATION MAP



“
Location LIKE THESE
ARE NOT EXPLAINED,
THEY ARE EXPERIENCED
”





**PROMOTERS & DEVELOPERS
GLAMCO EXIM PRIVATE LTD.**

OFF. ADDRESS :6- Sardar Patel path, North S k Puri Boring road,
Patna, Bihar-800013

Phone : **+91 9431047513**

E-mail : XXXXXXXX



RACHNAKAR

ARCHITECT . ENGINEER . PLANNER

351-A, ROAD NO.: 5, ASHOK NAGAR, RANCHI- 834002, JHARKHAND.

email : rachnakar2021@gmail.com, # 9835302856, 6203753371

DESIGN BY : PHOENIX DESIGN (6202288195 / 9304366467)

Disclaimer: All plans, drawings, amenities, facilities etc. are subject to the approval of the respective authorities and would be changed, if necessary. The discretion remains with the developer. All rendering, floor plans, pictures and maps are the artist's conceptions and not actual depictions of the building, its walls, roadways or landscaping. This brochure is for guidance and not a legal document. This brochure should also not be reproduced, copied or made available to others in any form of transmission. The Design & specifications depicted in the brochure are subject to change without prior notice. t